

[Catalog](#) > [E-BELL & Whistles](#) > 373 Series E-BELL

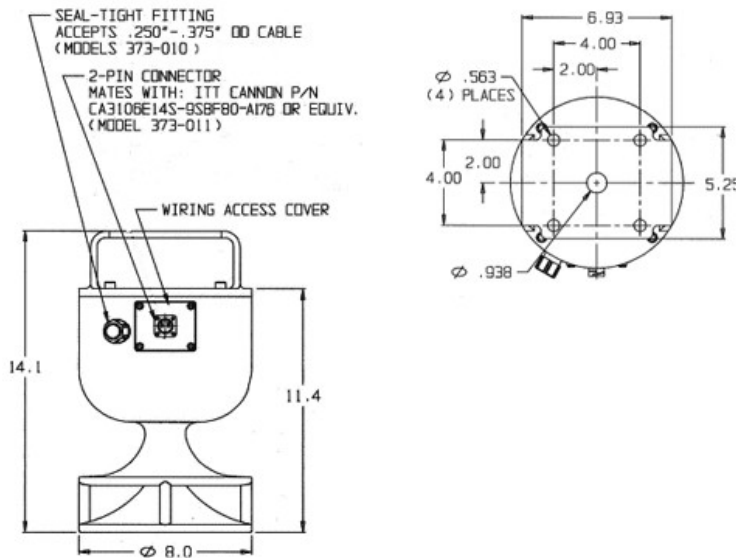
373 Series E-BELL

The 373 Series E-BELL is a solid-state electronic bell with a sound that is just like a pneumatic bell. It does this without the normal maintenance and/or potential freeze ups of conventional bell ringers. The design is half the weight of a cast iron pneumatic bell and just as rugged. A dual interface bracket makes it possible to retrofit GM and GETS locomotives with ease. Two models are available to choose from, which include a hardwired model (373-010), and a 2-pin connector model (373-011).



Technical Specifications

Illustration may not depict actual product specifications.




customer login

User Name:

Password:

Login

online customer support
section sign up

Get Access! 

customer feedback

Search:

Search

July 2011 :

[Graham-White's Digital Gauge Technology: "Light Years Ahead of Analog..."](#)

June 2011 :

[AAR Grants Conditional Approval to Graham-White's Gen III ASCTD](#)

May 2011 :

[REMAN Fights Greenhouse Gases](#)

January 2011 :

[Graham-White Re-Engineers Organization](#)

February 2010 :

[Graham-White Adds Solutions](#)

January 2010 :

[Graham-White: Ninety-Five Years of Success, Lifetimes of Achievement](#)

April 2009 :

[Graham-White Further Expands Market on African Continent](#)

March 2009 :

[Re-energized Public Relations Effort](#)

February 2009 :

[Graham-White Acquires The Vista Corporation of Virginia](#)

February 2008 :

[Graham-White's ASCTD Awarded Unconditional Approval from AAR](#)

August 2007 :

[Graham-White's FAX Service Proves Popular with Customers](#)

August 2007 :

[Graham White E-Bell @ Advancements Set New Standard for Reliability](#)

July 2007 :

[Graham-White Air Dryers Installed in GETS Locomotives in Tibet, China](#)

June 2007 :

[Graham-White Receives Major Contract for SafeSet™ Wheel Style Electric Locomotive Parking](#)

July 2006 :

[Graham White seizes opportunities for continued](#)

[growth in Remanufacturing Services](#)

June 2006 :
[Customers, Business Leaders Tour Graham White's Newest REMAN Facility in Shreveport, La.](#)

May 2006 :
[THE Evolution OF AIR DRYING Technology](#)

January 2006 :
[Initial Field Tests Successful for SafeSet™ Wheel Style Locomotive Parking Brake](#)

November 2005 :
[Graham White Mfg. Announces Central US Location](#)

June 2005 :
[Graham-White's FAX Service Lets Customers Track Orders, Check Invoices 24/7](#)

May 2005 :
[Graham-White To Showcase Wide Range of Products at 2005 American Public Transit Conference](#)

December 2004 :
[NEW WEBSITE RELEASE](#)

November 2004 :
[Graham-White Unveils New Products at Global Railway Tech 2004](#)

July 2004 :
[Graham-White celebrates 90 years of service](#)

[Home](#)

[About Graham-White](#)

[Contact Us](#)

[Services](#)

[Products](#)

[Support](#)

[E-Business](#)

© 2004 Graham-White ISO 9001:2000 Certified Facility



Member Railway Supply Institute

[Legal Notices and Terms of Use](#)